


Durham Joins Together to Save Lives

June 23, 2022

Co-Chairs

Dr. Wanda Boone, CEO Together for Resilient Youth

Wendy Jacobs, Board of County Commissioners

	Agenda Items
5:30-5:35	Welcome - Wendy Jacobs, Task Force Co-Chair
5:35-6:05	Guest Presenter: Introduction, Presentation and Q&A
	Committee Reports
6:05-6:25	Prevention and Education –Dr. Wanda Boone 
6:25-6:45	Mental Health and Substance Use Disorders – Gudrun Parmer and Carlyle Johnson
6:45-7:00	Discussion, Questions, Feedback, Next Steps
	Next Meeting: September 22, 2022 via Zoom

Welcome to Together for Resilient Youth (TRY)

Founded in 2003, we continue to be a coalition committed to serving communities on a local, national and international level.





Natalia	Rosales	LIFT Leader
Jordyn	Burton	LIFT Mentor
Angie	Mejia	LIFT Coordinator
Nancy	Rosales	Community Health Worker, Program Facilitator
Darian	Boone	Business Community
Lee	Barnes	Business Community
Jason	Southworth	Business Community
Earl	Chestnut	Civic/Volunteer Group
Mindy	Solie	Civic/Volunteer Group
C. Earl	Boone	Good Neighbor Network (Business)
Harlan	Crenshaw	Law Enforcement – Police Department
Andre	Hinton	Law Enforcement - Sheriff's Office
Jovonia	Lewis	Schools
Shaneeka	Moore-Lawrence	Schools
Jude	Hostler	Other Organization with Expertise in Substance Abuse
Patricia	Murray	Media
Florine	Moore	Faith organizations
Wendy	Jacobs	State, local, and/or tribal government agencies
Dedreana	Freeman	Youth-serving organizations
Jennifer	Meade	Other Organization with Expertise in Substance Abuse
Ashley	Mitchell	Healthcare Professionals
Nicole	Schramm-Sapayta	Healthcare Professionals



As we travel along, each Stakeholder is contributing and being supportive so that when we reach our destination, success is truly achieved.



Examples of our Inner Stakeholders include:

- Youth
- Parental
- Healthcare
- Law enforcement
- Schools
- Local business owners
- Faith based leaders

ORGANIZATIONAL LEADERSHIP

Examples of our External Stakeholders include:

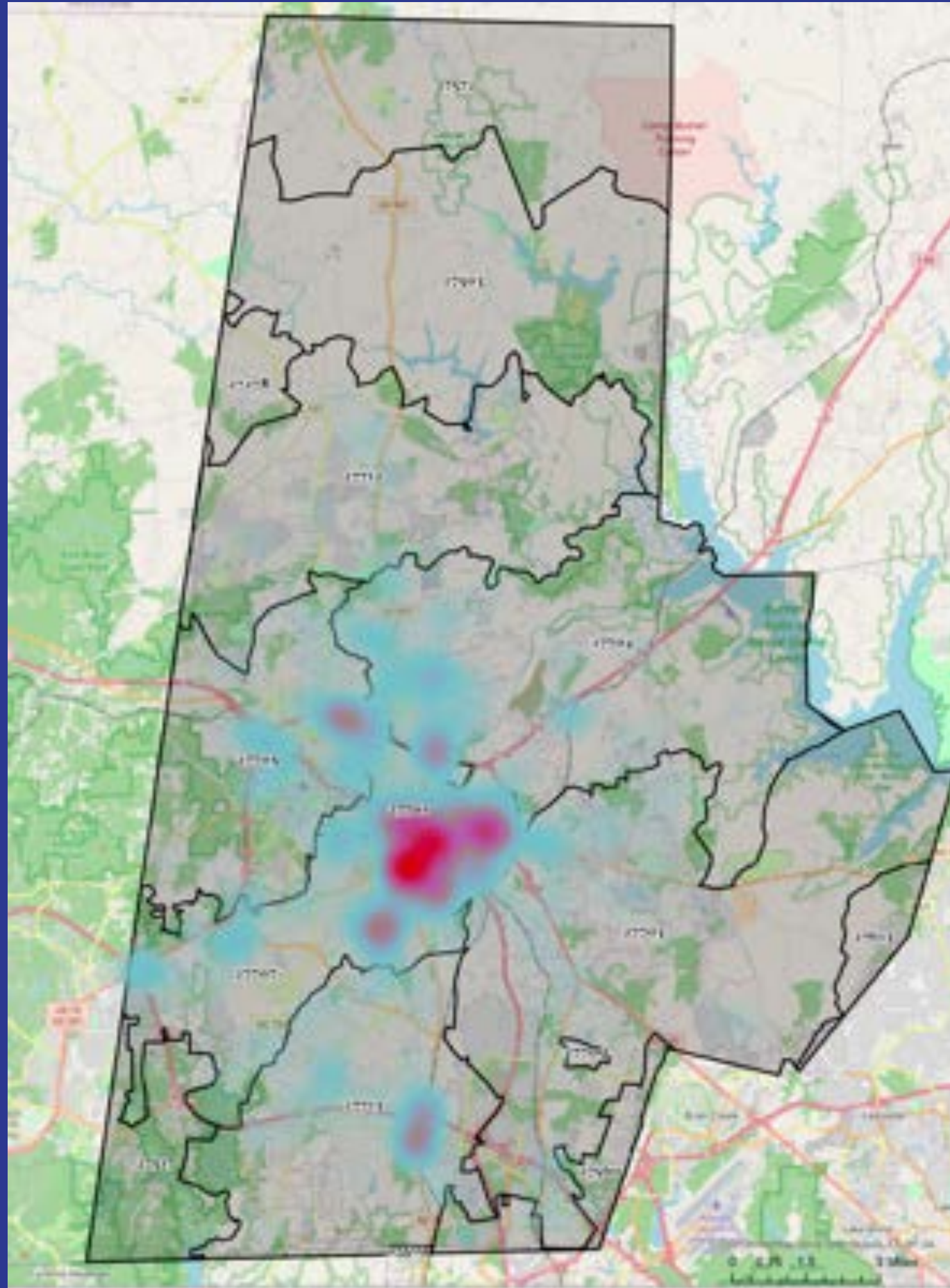
- Participatory researchers
- Academic partners





These are our children and despite their differences in appearances, neighborhoods and socio economic backgrounds, they will share experiences that could permanently and negatively affect the course of their lives.

OUR YOUNG PEOPLE GO TO SCHOOL TOGETHER ALL CHILDREN NEED OUR ASSISTANCE TO BE MORE RESILIENT



Living in Future Tense (LIFT)

Overall youth: Substance

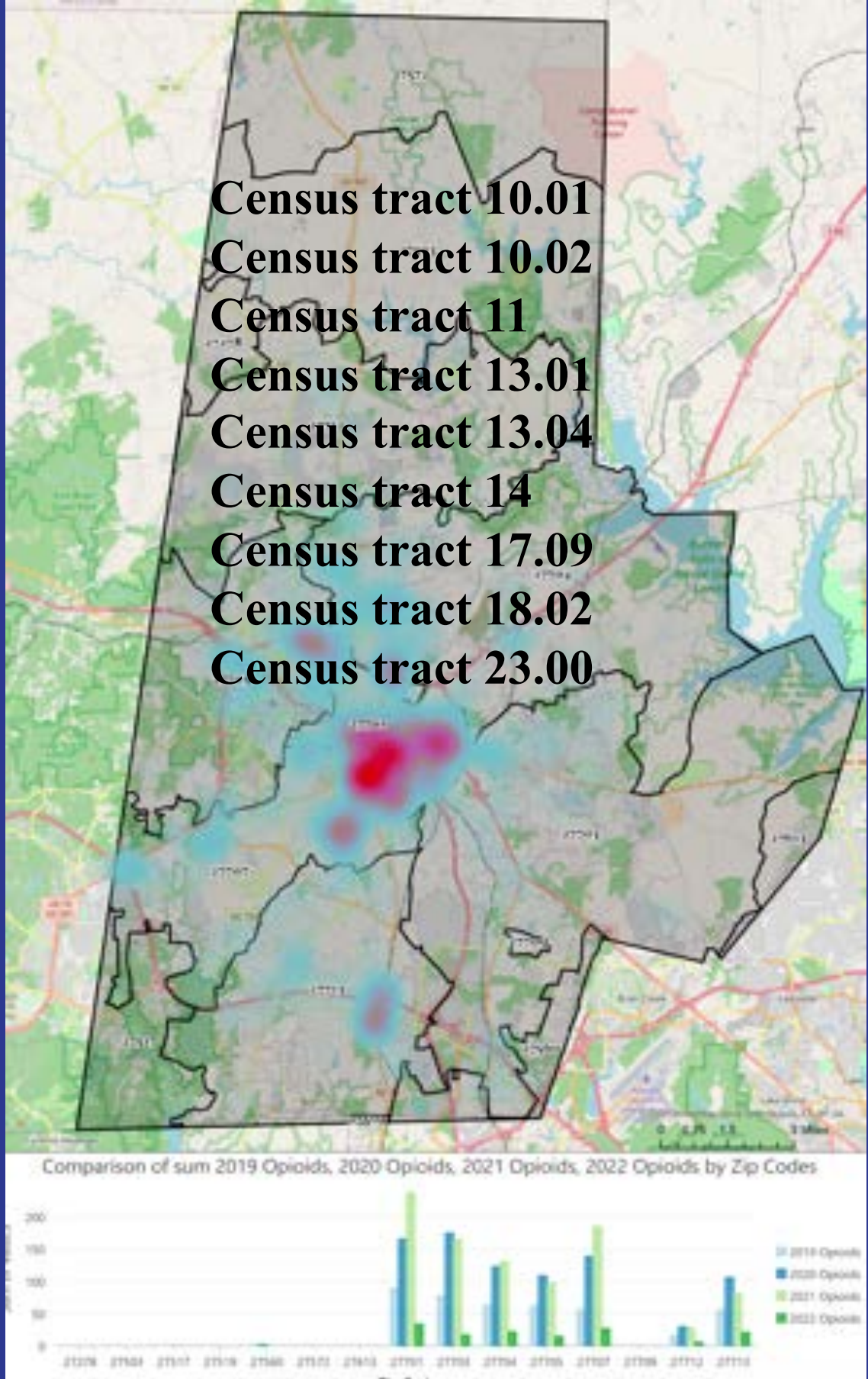
Alcohol Use 23% of middle school students 26% of high school
Marijuana – Middle school 12% and high school 22%

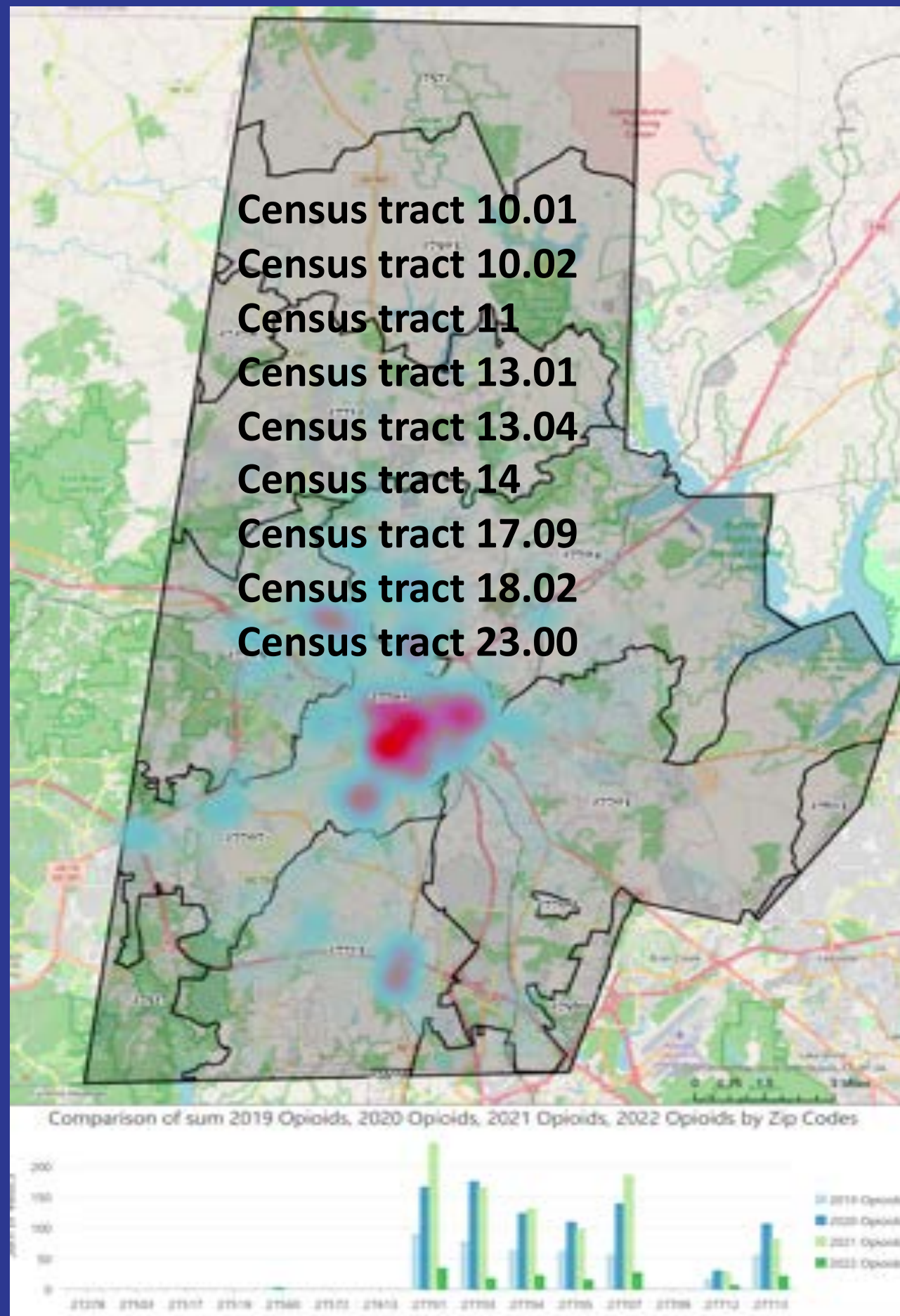
Court-involved juveniles: Substance use:

52% of court-involved juveniles report using alcohol and/or drugs
(NCDPS, 2021)

Gang involved individuals:

92.5% of gang-involved individuals report using weed and/or other substances.
62.5% of gang involved individuals report using weed more than once a day,





Mental Health 32% Middle school and 35% of high school students report feeling depressed for 2+ weeks (DCDPH, 2021) 27% middle school students ever considered suicide; 19% of high school students considered suicide in the past 12 months. Youth listening sessions: “Young people feel an overwhelming need for mental health support to help them survive the experiences they are faced with.”

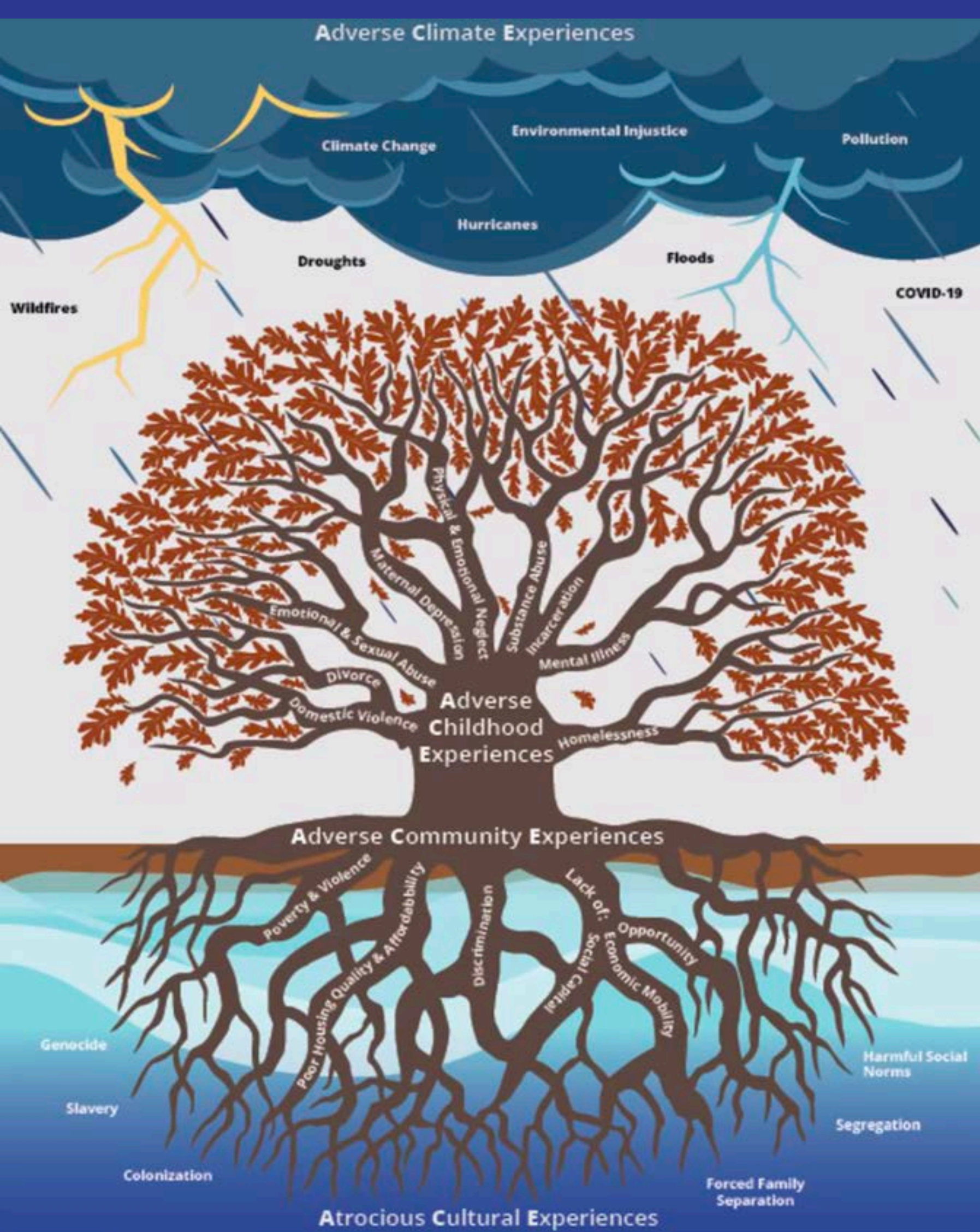
Court Involved Mental Health 37.6% mental health issues (YASI) 45% need more mental health assessment (NCDPS, 2020)

“Gang Involved” Mental Health 75.8% of school personnel and 95.2% of youth serving agency 49.1% of public safety personnel report low self-esteem in the youth they work with.

Education: Only 37% of Durham County 3rd-8th graders and 31% of 9th-12th graders scored “College and Career Ready” on end-of-grade exams in 2018-19.

Fewer than 5% of students at Lakeview Alternative School were rated proficient on end of year exams (20-21).

100% of gang involved individuals 14-17 report they have dropped out of school 77.6% dropped out of school.

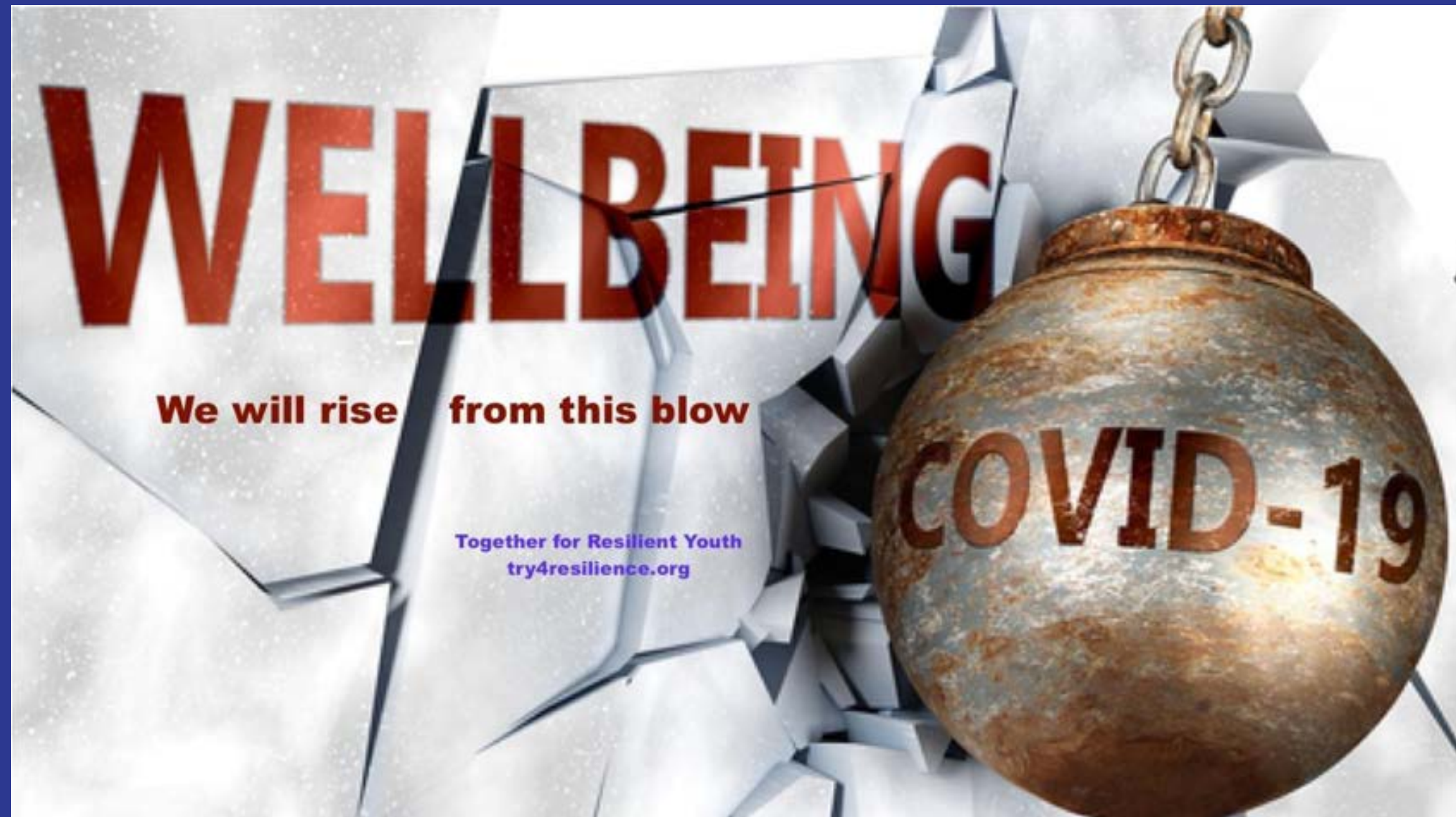


ADVERSE CLIMATE EXPERIENCES

ADVERSE CHILDHOOD EXPERIENCES

ADVERSE COMMUNITY EXPERIENCES

ATROCIOUS CULTURAL EXPERIENCES



ASSISTED WITH OVER 6,000 TESTS AND VACCINES OVER 6 MONTHS

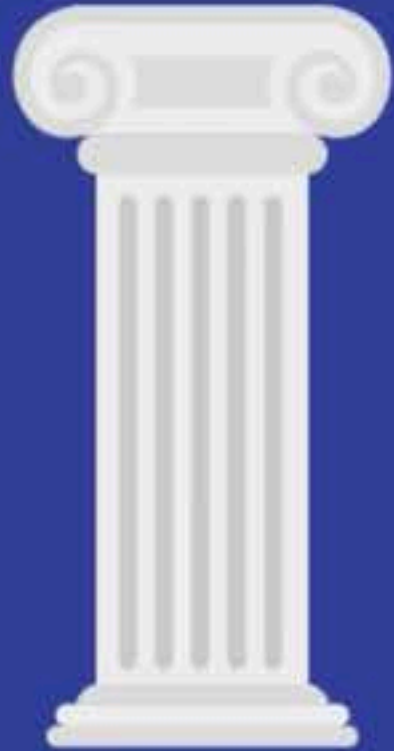
STRESS

GRIEF

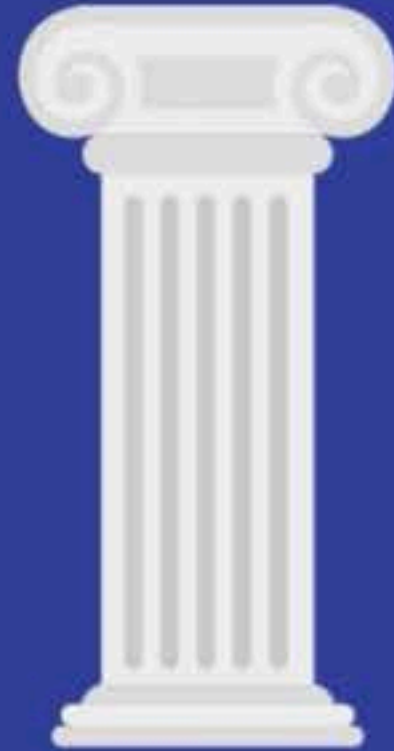
SUBSTANCE USE PREVENTION

TRY INTERVENTIONS

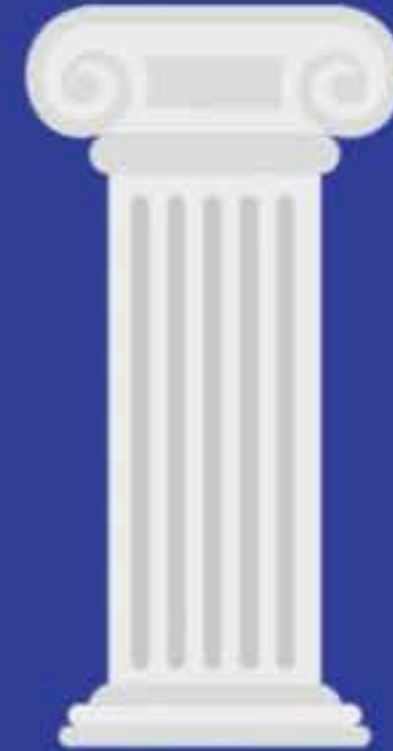
**COLLECTIVE
IMPACT**



Common
Agenda



Shared
Measurement



Mutually
Reinforcing
Activities



Continuous
Communication



Family Risk Factors/Parent unable to Supervise 57% of youth have parents whose parenting skills are marginal; 4% inadequate; 20.4% of parents unable to supervise (NCAR, 2020). 6% kicked out of their home; 23.2% often or usually disobey family rules (YASI, 2021)72.5% had a family member incarcerated before age 18. 76.3% of public safety personnel report that youth they interact with have parents who are absent, addicted or unable to help youth



3 Cohorts = 64 families 192 Participants

- 90% identified as African American; 10% identified as Latinx
- 90% of respondents reported having a daily impact from COVID-19
- 100% of respondents reported having a daily impact from racism pre pandemic
- 80% of respondents reported that in the last month they felt nervous and “stressed”
- 90% of respondents had difficulty communicating as a family

WEEK 1 BECOMING A STRONG FAMILY 75%

WEEK 2 BECOMING A FAMILY THAT TALKS TOGETHER 75%

WEEK 3 SETTING A FAMILY VISION 100%.

WEEK 4 BECOMING A FAMILY WITH A PLAN 100%

WEEK 5 BECOMING A FAMILY THAT OVERCOMES TOGETHER 80%

WEEK 6 BECOMING A FAMILY THAT TALKS TOGETHER 90%

WEEK 7 ACTION PLANNING 90%

WEEK 8: FUTURE PLANNING & CELEBRATING PROGRESS 100%



COPING TOGETHER

A weekly virtual program for the whole family

Together for Resilient Youth is excited to offer the first Coping Together Program in North Carolina!

Because it's the first time, we'll ask for your feedback to make the program better!

Each family member will receive gift cards for filling out surveys before, during, and after the program!

8 summer sessions | 1 hour/week
PROGRAM IS FREE FOR ALL FAMILIES
WITH YOUTH AGES 10-17!!

What is the program about?

- Communicating as a family
- Exploring family values and strengths
- Coping with stress during the pandemic and beyond
- Activities and discussions for parents and kids/teens!

Change Your Words. Change Your World.

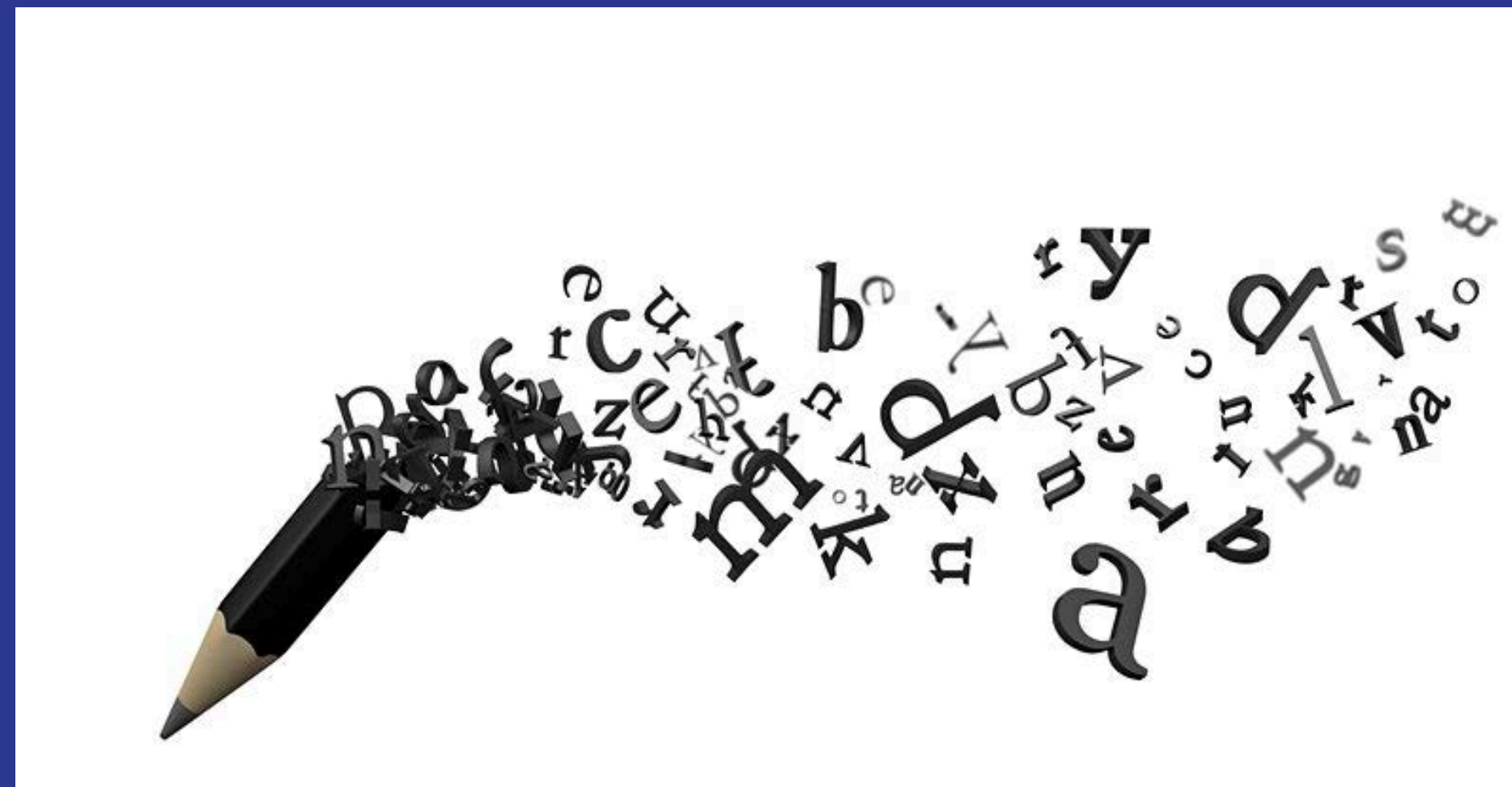
Helps manage the challenges of high stress, decreasing immune function, increasing chronic symptoms, deteriorating health, grief and overcoming trauma. It has been proven to increase immunity, improve overall health, and subsequently improve quality of life. Research has shown that expressive writing is known to decrease depression, stress, rumination and increase resilience. **No writing experience is necessary for this series!**

168 Participants

4 Sessions and 8 Trainers

100% decrease in depression and ruminations

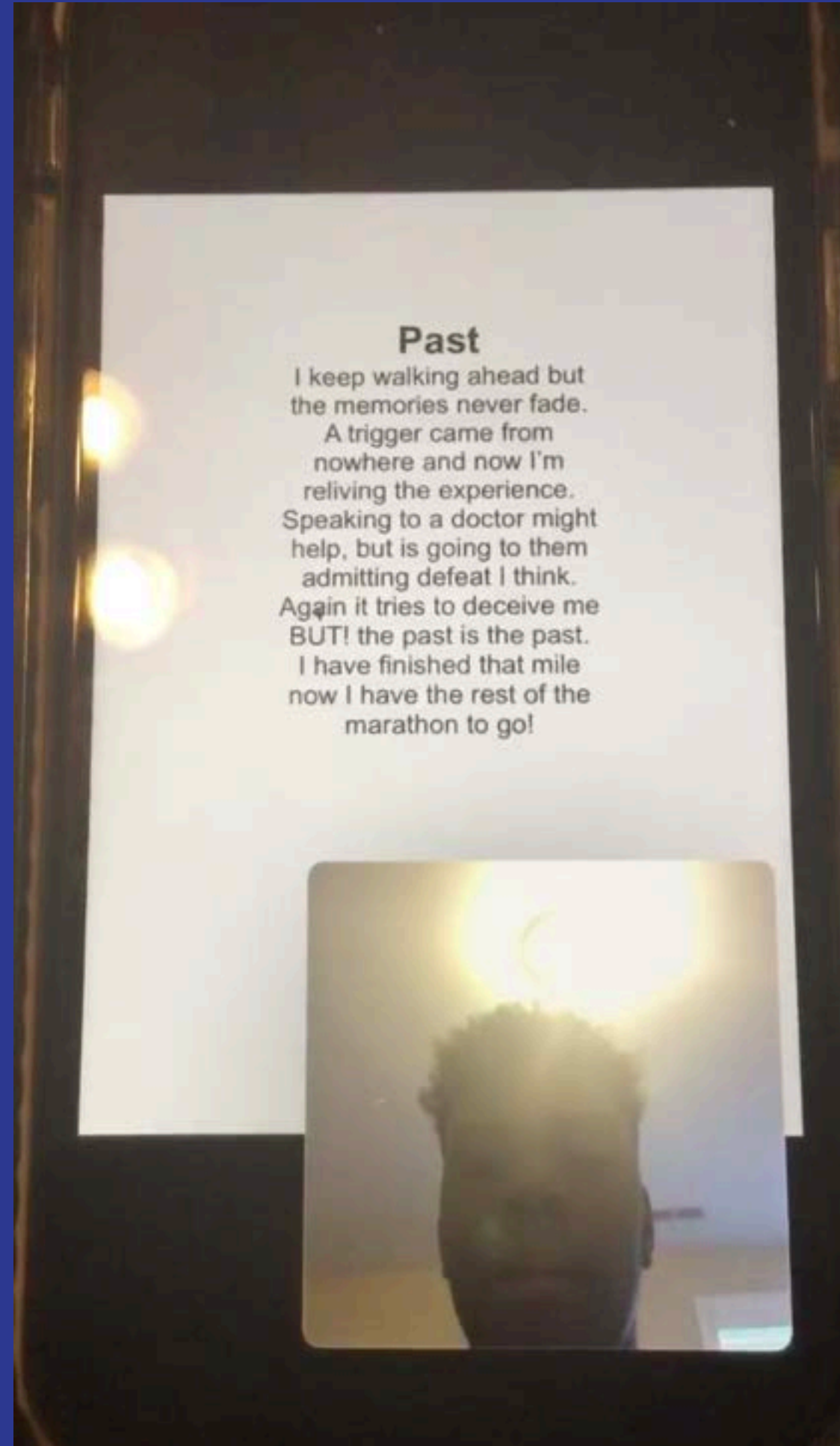
90% felt more resilient



TRY YOUTH COALITION LIVING IN FUTURE TENSE - LIFT



TRY YOUTH COALITION LIVING IN FUTURE TENSE - LIFT



Empower Dance Foundation
17 hrs · 🌐

We are **EXCITED** and super proud of our six Empower dancers as they head to L.A. tomorrow, for a month of training and experience of a lifetime with no other than Mrs. Debbie Allen!!

Nathalia Rosales

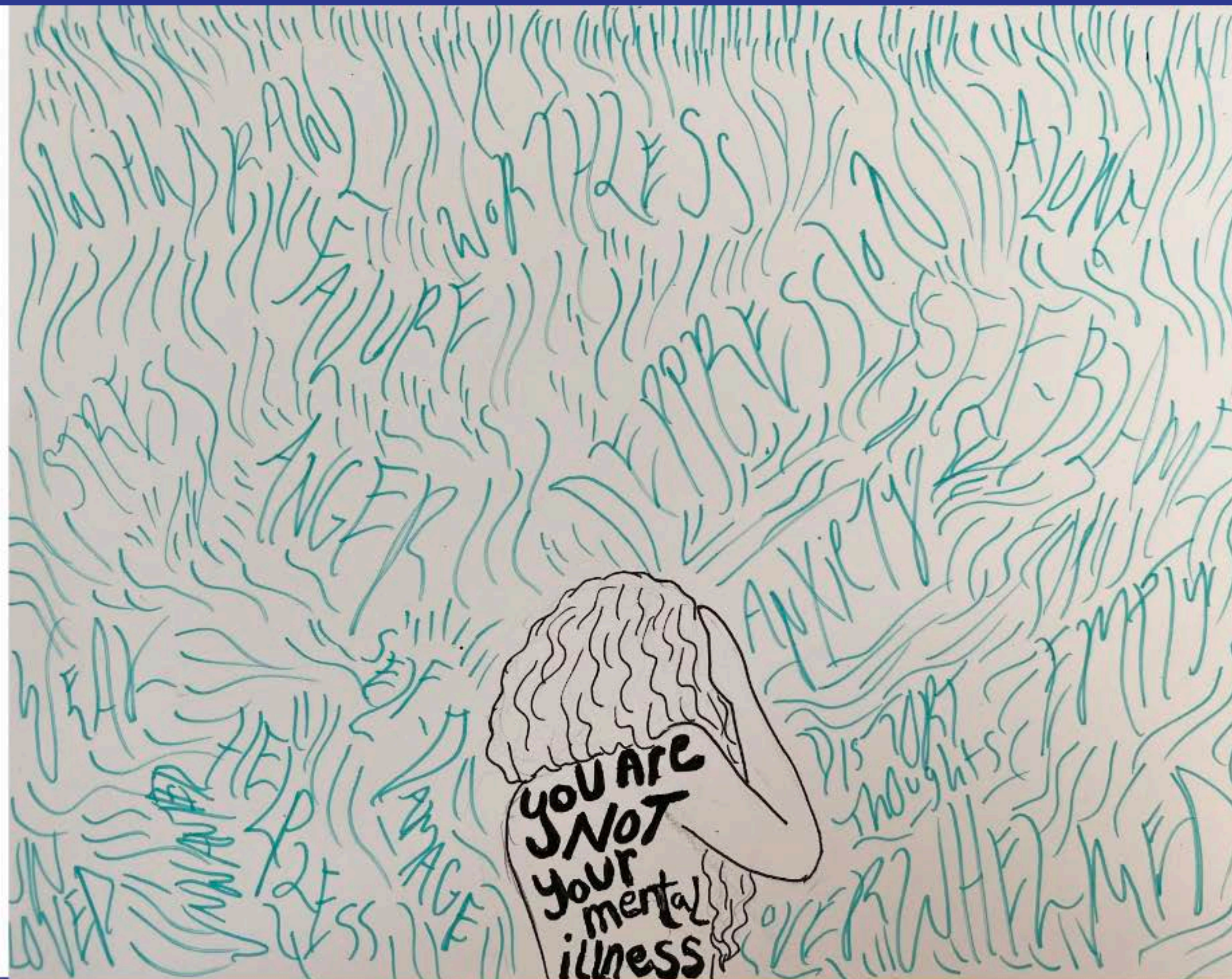


Table 4.3 Homicides by gang member involvement, 2018-2020

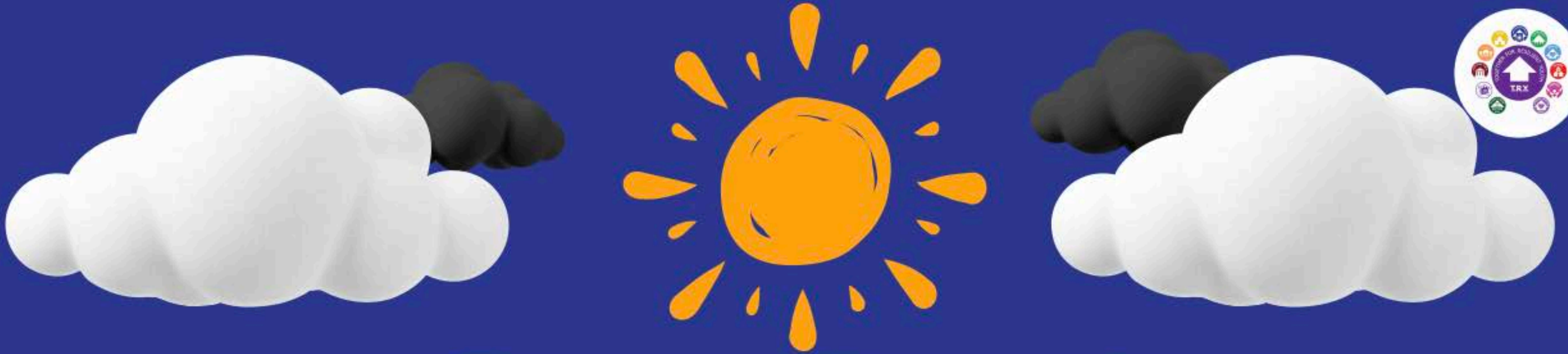
Year	Gang Member Involved		Not Gang Member Involved		Total #
	#	%	#	%	
2018	17	51.5%	16	48.5%	33
2019	10	29.4%	24	70.6%	34
2020	9	24.3%	28	75.7%	37
Total	36	35.0%	67	65.0%	103

Table 4.4 Aggravated assaults by gang involvement, 2018-2020


Year	Gang Member Involved		Not Gang Member Involved		Total #
	#	%	#	%	
2018	126	15.8%	669	84.2%	795
2019	97	11.0%	788	89.0%	885
2020	133	12.8%	910	87.2%	1043
Total	356	13.1%	2367	86.9%	2723

Most are NOT Gang Involved





These are our children and they will all face adverse experiences and negative influences. With our help, they can overcome these obstacles to develop into empowered and resilient adults.

A blue-tinted photograph showing three hands cupping a heart. The hands are positioned around the heart, with fingers slightly curled, suggesting a protective or nurturing gesture. The heart is the central focus, and the overall image conveys a sense of care and support.

**Every child needs at least
ONE ADULT who is
IRRATIONALLY CRAZY
about him or her.**

-Uri Bronfenbrenner





Figure 3
Guiding Principles

Resiliency-Informed

- People are resilient.
- People need our compassion as they learn new skills.
- We need to learn how skills of well-being can reduce suffering.
- **What is right with you?**
- **What are your strengths?**

Black/African American high school students (20%) were more likely to report considering suicide in the past 12 months compared to White (16%) and Hispanic/LatinX (17%) high school students

Black/African American (17%) and Hispanic/LatinX (18) high school students were more likely to report planning for suicide in the past 12 months than White high school students (12%).

Black/African American students (13%) were 3.3 times more likely than White students (4%) to report a suicide attempt in the prior 12 months and Hispanic/LatinX high school students were 4.2 times more likely to report a suicide attempt in the prior 12 months than White high school students (DCDPH, 2021).



Conventional

- People are bad.
- People need to be punished.
- We need to stop making excuses for people.
- **What is wrong with you?**

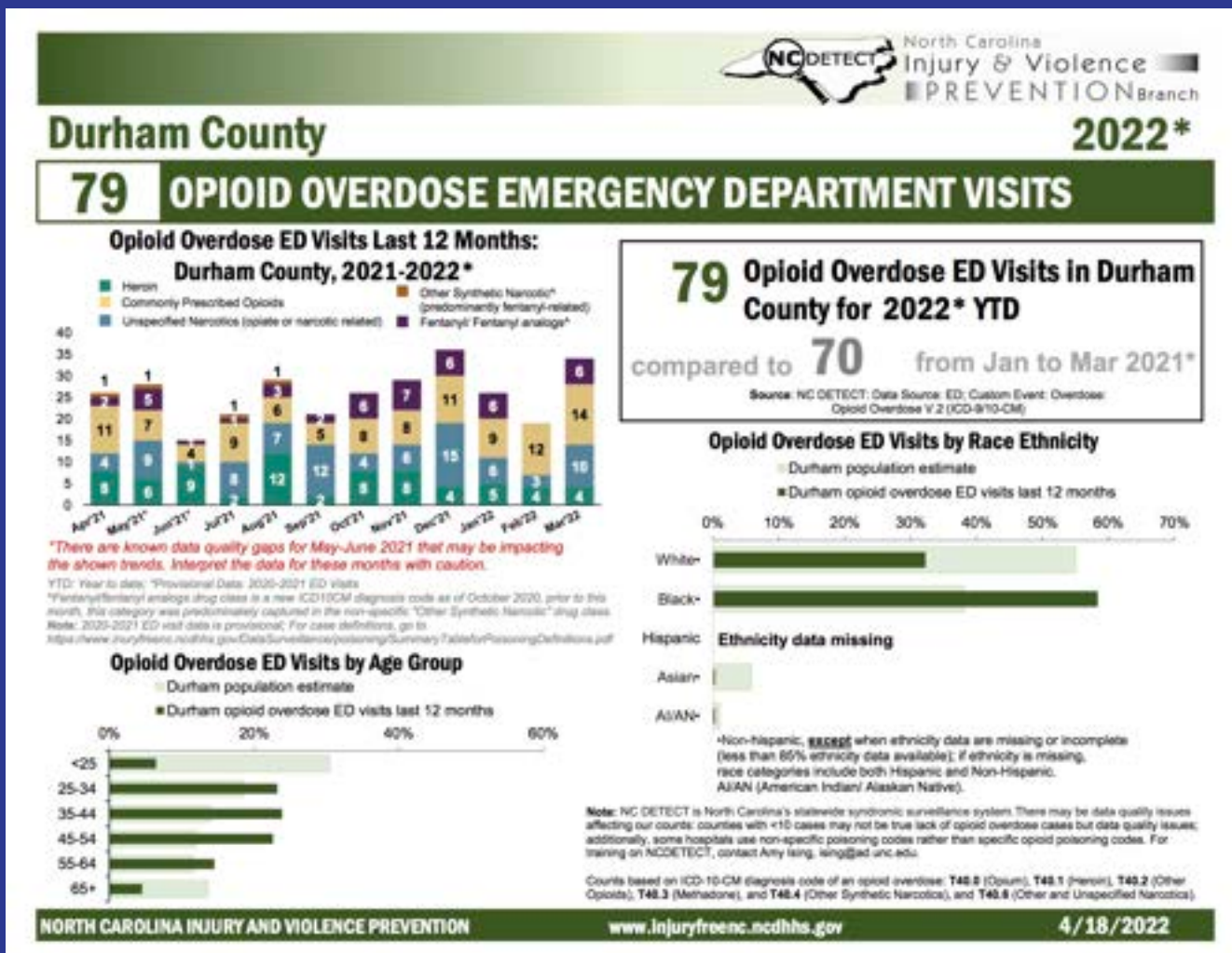
Trauma-Informed

- People are suffering.
- People need an effective intervention.
- We need to focus trauma impacts development.
- **What happened to you?**

Resiliency-Informed

- People are resilient.
- People need our compassion as they learn new skills.
- We need to learn how skills of well-being can reduce suffering.
- **What is right with you?**
- **What are your strengths?**





**TRY
CONNECTS
THE DOTS**

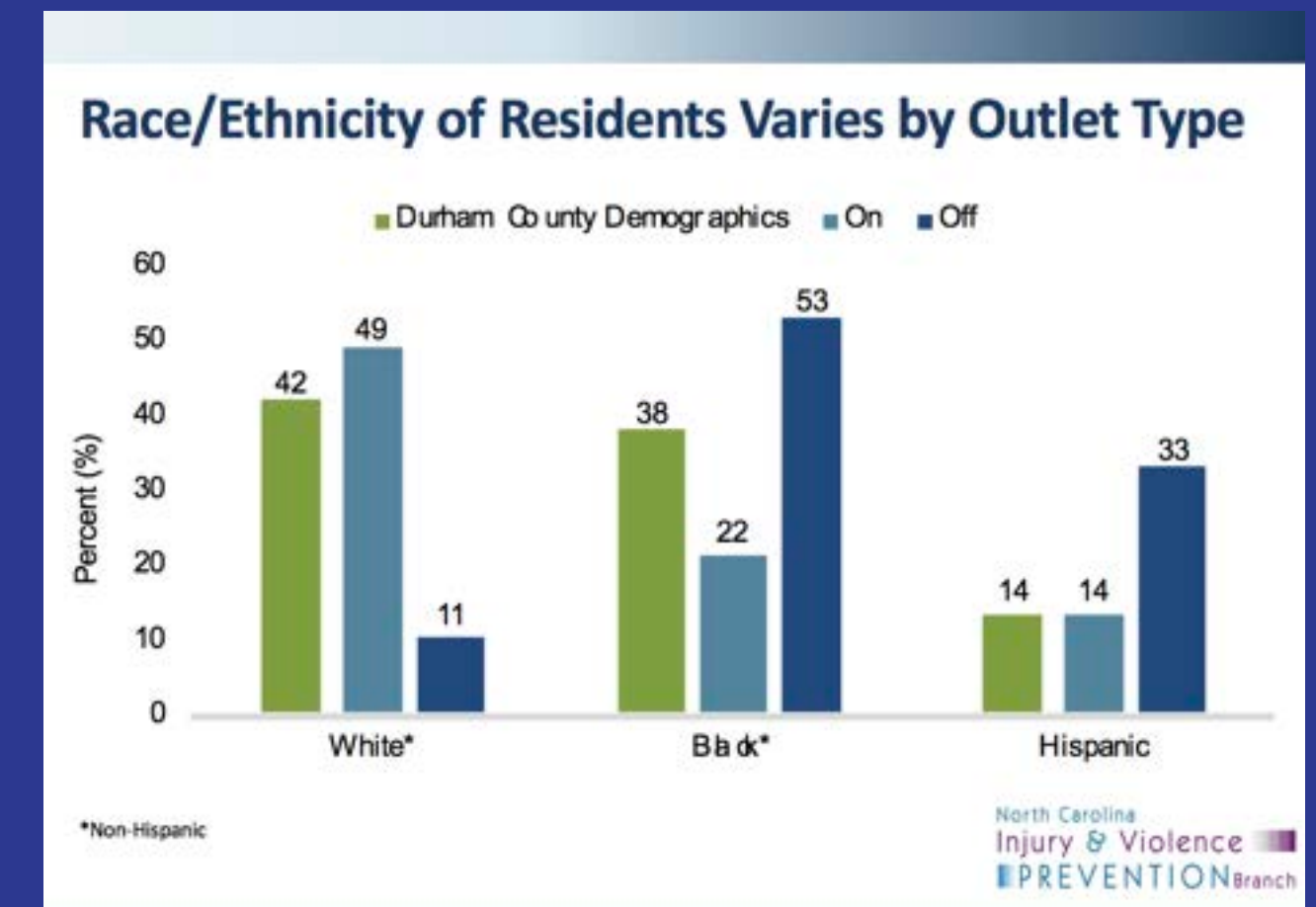
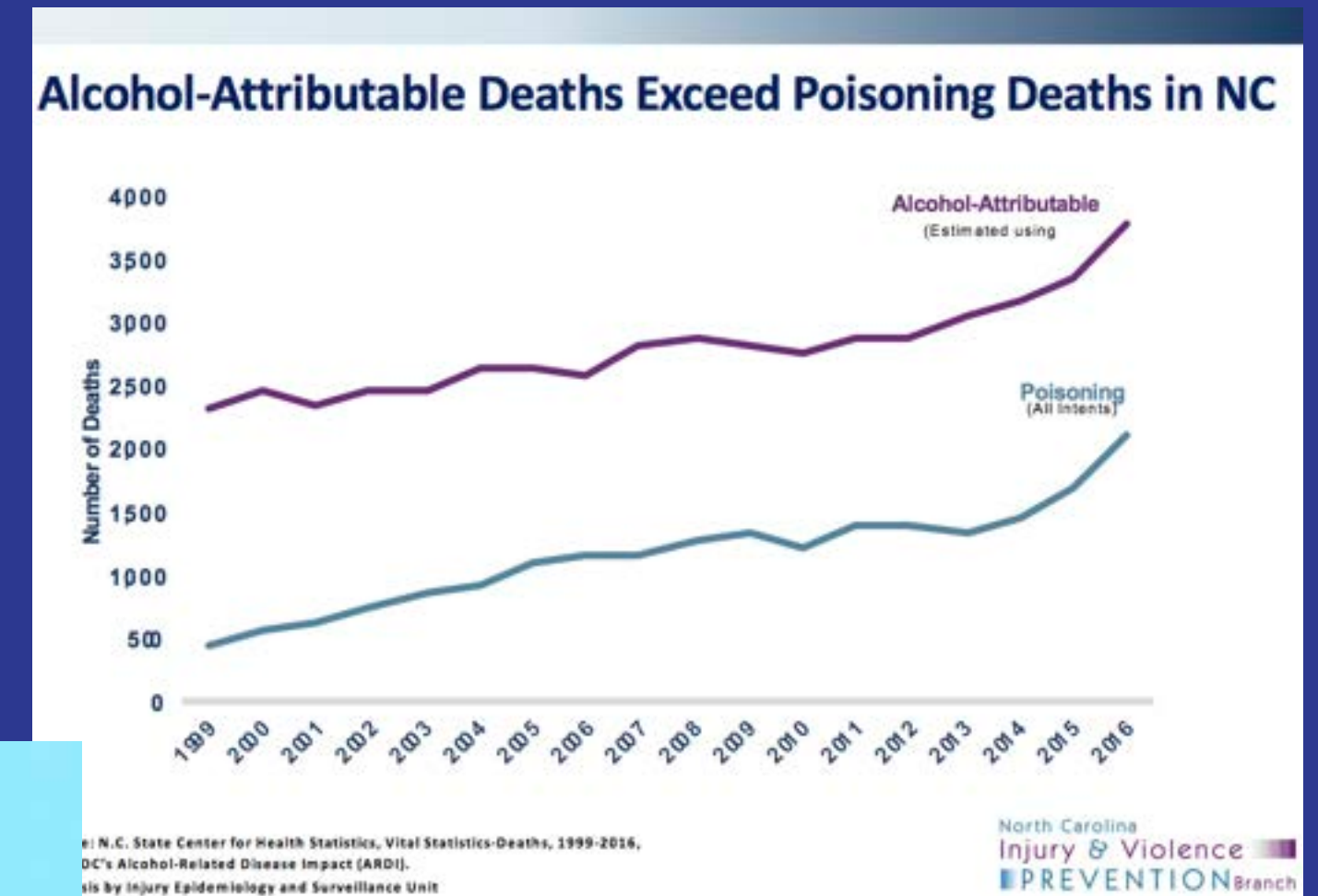
- Share the information from a weekly info alert with your Stakeholder group
- Visit the Durham County Department of Public Health pharmacy for a free naloxone kit
- SROs and a school staff member on site should have naloxone on hand.
- TRY's seven strategies apply

MAY 10 NATIONAL FENTANYL AWARENESS DAY

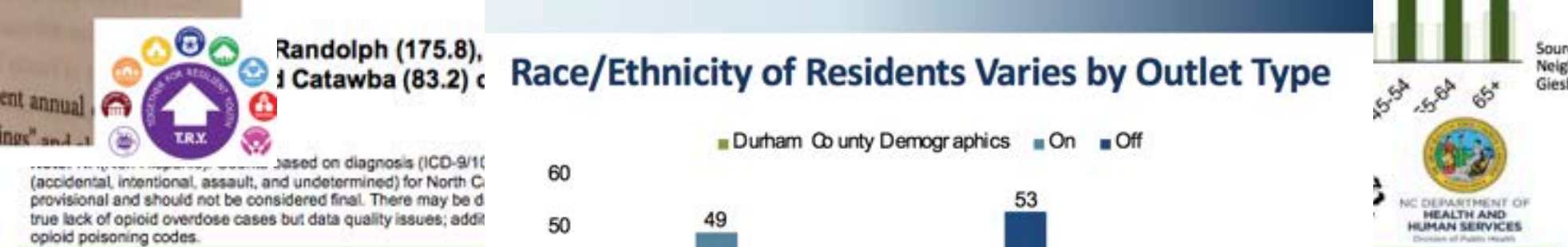
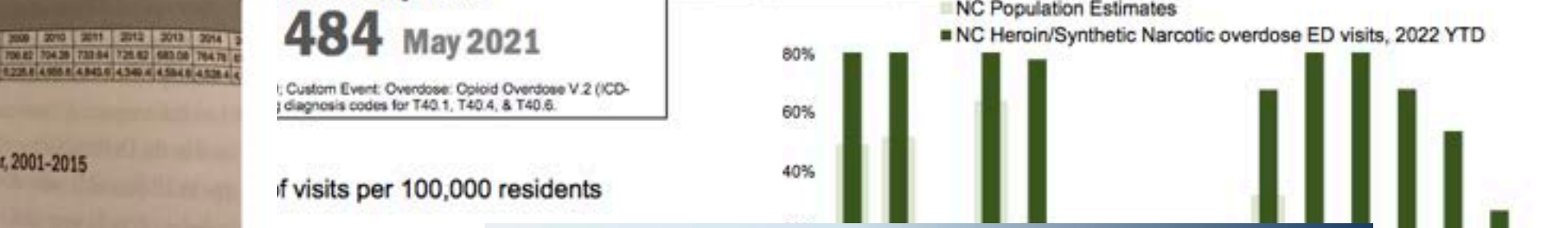
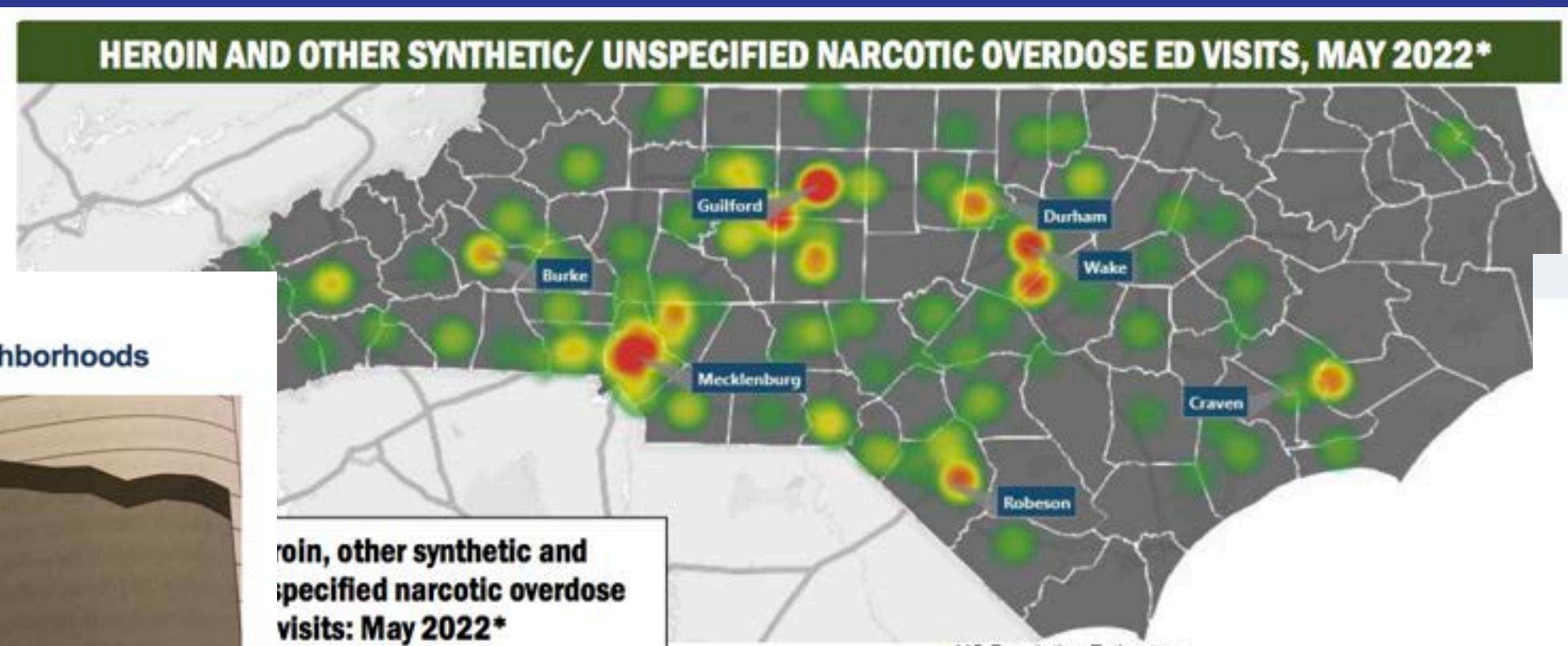
Illegally made fentanyl is the primary driver of the recent increase in all U.S. overdose deaths. Fentanyl-involved deaths are fastest growing among 14-23 year olds.

SPREAD THE WORD

#NationalFentanylAwarenessDay #JustSayKNOW



COMPLIANT ALCOHOL OUTLETS = DECREASE IN CRIME AND OTHER CHALLENGES



NORTH CAROLINA INJURY AND VIOLENCE PREVENTION

Based on diagnosis (ICD-9/10) (accidental, intentional, assault, and undetermined) for North Carolina. Data is provisional and should not be considered final. There may be a true lack of opioid overdose cases but data quality issues; add opioid poisoning codes.

Source: North Carolina Injury & Violence Prevention Branch, 10/13/2022

Published Alcohol Outlet Density in Predominantly African American and Hispanic Neighborhoods

Regulating Outlets That Sell Alcohol in Predominantly African American and Hispanic Neighborhoods

Wanda Johnson Boone

INTRODUCTION

Together for Resilient Youth (TRY) is a nonprofit organization (also known as Friends Community Development Corporation) located in Durham County, North Carolina, in the United States. TRY was founded in 2001 by Dr. Wanda Johnson Boone (the author). TRY's mission is to prevent substance abuse among youth and adults by reducing community risk factors through education, mobilization, and action. TRY is a collaboration of 42 active members coming from diverse socioeconomic and ethnic backgrounds and takes a public health approach to substance use prevention. The authors believe that the public health model has been an essential element in promoting substance use, violence, and crime in our communities, particularly in communities of color.

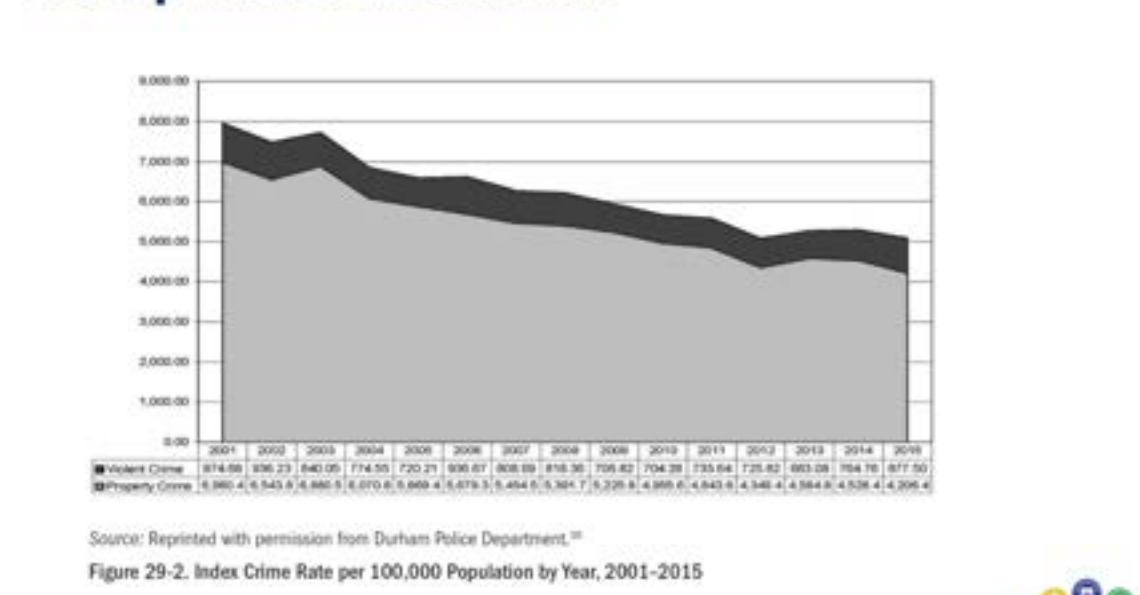
DESCRIPTION OF THE PROBLEM

Durham is fortunate to have a prosperous, growing economy but is also plagued with neighborhoods with grinding poverty. Durham has been named one of the best places to live and one of the best places to start a business while also being labeled as high rates of gun violence, violent crime, and drug abuse. In the decades after the Civil War, Durham gave rise to a prosperous Black financial district where African American entrepreneurs launched businesses and community leaders organized institutions. Durham was internationally known as an industrial city, manufacturing tobacco and textile products. The city changed as "urban renewal" led to the building of the 1950s-style products. The city changed as "urban renewal" led to the building of the 1950s-style products.

IMPACT AND OUTCOMES

TRY's efforts included law enforcement annual reports from law enforcement "stings" and...

Crime Decreases as Alcohol Retail Outlet Compliance Increases



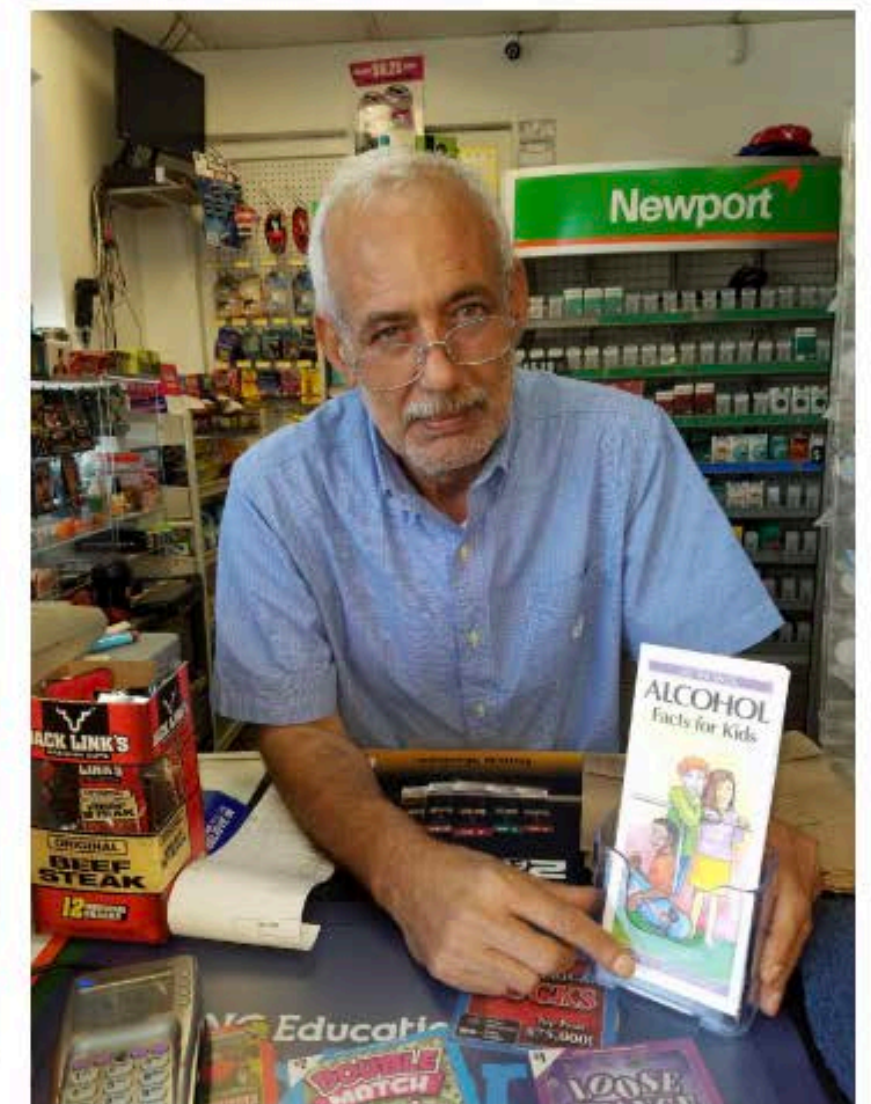
Source: Boone, Wanda Johnson. "Regulating Outlets That Sell Alcohol in Predominantly African American and Hispanic Neighborhoods." In *Preventing Alcohol-Related Problems: Evidence and Community-Based Initiatives*, edited by Norman Giesbrecht and Linda M. Bosma, 397-408, n.d.



TRY Good Neighbor Business Network 550+ Businesses

- Pharmacies
- Taxi Companies

GNBN partners are mentioned in two Full page ads that reached over 750,000 citizens.



Together for Resilient Youth thanks the following businesses for being part of the Together for Resilient Youth GOOD NEIGHBOR BUSINESS Network! Each Good Neighbor Business signs a non-legally binding affirmation, expressing their commitment to the health and wellness of Durham residents. Sign up at DurhamTRY.org

Together for Resilient Youth
Vision: Healthy Resilient Youth in a Drug Free Community.
Mission: To prevent substance use and risky behavior among youth by reducing risk factors through community education, mobilization and collaborative action.

ALCOHOL USE AND ABUSE HEALTH AND PRODUCTIVITY COSTS
 Annual costs for United States are over 280 billion dollars
 Annual costs in North Carolina are over 5.5 billion dollars
 Annual costs in Durham County are over a quarter billion dollars
 Over 20,000 people in Durham, NC are addicted to alcohol or other drugs
 Year Longevity: Annual of other most common causes of death are alcohol related and tobacco related. In Durham County 2010

MEMBER LIST:

T.R.Y. GOOD NEIGHBOR BUSINESSES MEMBERS

<p>GOOD NEIGHBOR PHARMACIES Degree of award institutions, Inc. Carolina Behavioral Care Pharmacy 608 New Heights Boulevard DUMHAM, NC 27834</p> <p>OPEN 2007 WITH EDUCATING Bahar's Pharmacy Center 2106 South Street Durham, NC 27834 919-286-1111 2106 South Street Durham, NC 27834 919-286-1111</p> <p>USE MEDICATIONS SAFELY Please take medicines that's with 1. Take medicines as directed 2. Take medicines on time 3. Take up medicines 4. Take medicines with food 5. Take medicines with water</p> <p>LEARN MORE AT DURHAMTRY.ORG</p>	<p>GOOD NEIGHBOR BARBER SHOPS AND BEAUTY SALONS Support the community with South and Wilson celebration Devonian Beauty, Devonian Hairdressing, Barbers & Cleaners Perfect Cuts Barber Shop Elizabeth Barber Shop Ethnic Barber Shop at South Park</p>
---	---

Dr. Wanda Boone
 Founder/Director
 DurhamTRY.org
 @Together4Youth
 Together for Resilient Youth

Addressing Youth Mental Health and Substance Use



Presenters
Christopher Jones, PharmD, DrPH, MPH
Deputy Director, Centers for Disease
Control and Prevention
Dr. Wanda Boone, CEO
Together for Resilient Youth



Centers for Disease Control, 2016: Higher ACE scores are directly correlated with a wide range of health and behavioral/mental health issues. **An ACE score of 7 increased the odds that an individual would attempt suicide by thirty-one times** compared to a person with an ACE score of zero (Dube et. al, 2001). The ACE instrument have found that **ACE exposure is correlated to higher rates of smoking, drug use, heavy alcohol use, poor educational and employment outcomes, incarceration, and involvement in violence both as a perpetrator and victim** (Baglivio, et. al., 2015).

We know we can't control what we are born into and at T.R.Y., we believe that despite the challenges we are presented with, we can empower ourselves to

**live resilient
and healthy lives.**

WE ARE THE
BUILDERS WHO
ARE BUILDING
A WORLD THAT
HAS NEVER
BEEN BUILT
BEFORE.

